

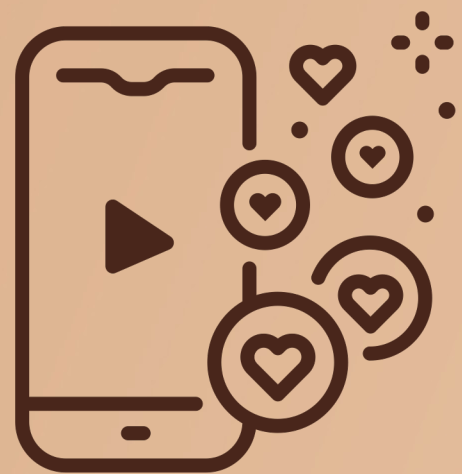


BELLA GRACE
REWARDS PLAN

1



BELLA GRACE IS **THE FIRST COMPANY** TO INTEGRATE THE BEST OF THE AFFILIATE MARKETING MODEL WITH **THE SOCIAL MEDIA INFLUENCER WORLD.**



For Influencers, we offer long-term residual income without any startup fees or short-term contracts.

We believe whenever our followers subscribe to Bella Grace products or influencingU, you should be paid. Regardless of how many people follow you, you can be a **Bella Grace/influencingU** Influencer and receive 20% in Customer Commissions daily on influencingU subscriptions and up to 30% on Bella Grace products.

We provide you with a personalized website, real-time reports, training resources and exclusive marketing tools.



U+3=FREE

GET 3 FRIENDS ON AN ELIXIR SUBSCRIPTION, AND YOUR ELIXIR SUBSCRIPTION IS FREE!

Receive a free Elixir when you maintain an Elixir subscription and three of your friends (Ambassadors, Influencers, or Customers) subscribe to the same. Your own Elixir subscription becomes completely free—just cover shipping and tax. This offer is open to all Ambassadors, Influencers, and Customers. Receive up to two Elixirs for free.

3 FRIENDS

**MONTHLY
SUBSCRIPTION**

FREE



WANT TO EARN MORE MONEY?

Join as an Ambassador and unlock our full Rewards Plan for just \$49.99 USD a year.

You'll get everything our free Influencers receive plus you are eligible to earn even more—more money, trips, recognition for your achievements, and invaluable leadership skills.

Take a look at our Rewards Plan and see why we're attracting so many people like you, who are looking for a side gig, a second revenue stream, or a full-time business.

MORE MONEY

TRIPS

RECOGNITION



AMBASSADOR REWARDS PLAN

AMBASSADORS CAN EARN DAILY, WEEKLY, MONTHLY, AND QUARTERLY COMMISSIONS AND BONUSES.

01

PAID DAILY

- Customer Commissions
- Builder Bonus



02

PAID WEEKLY

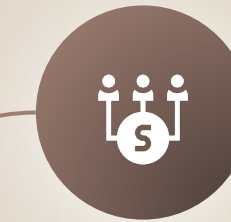
- Personal Sponsoring Bonus



03

PAID MONTHLY

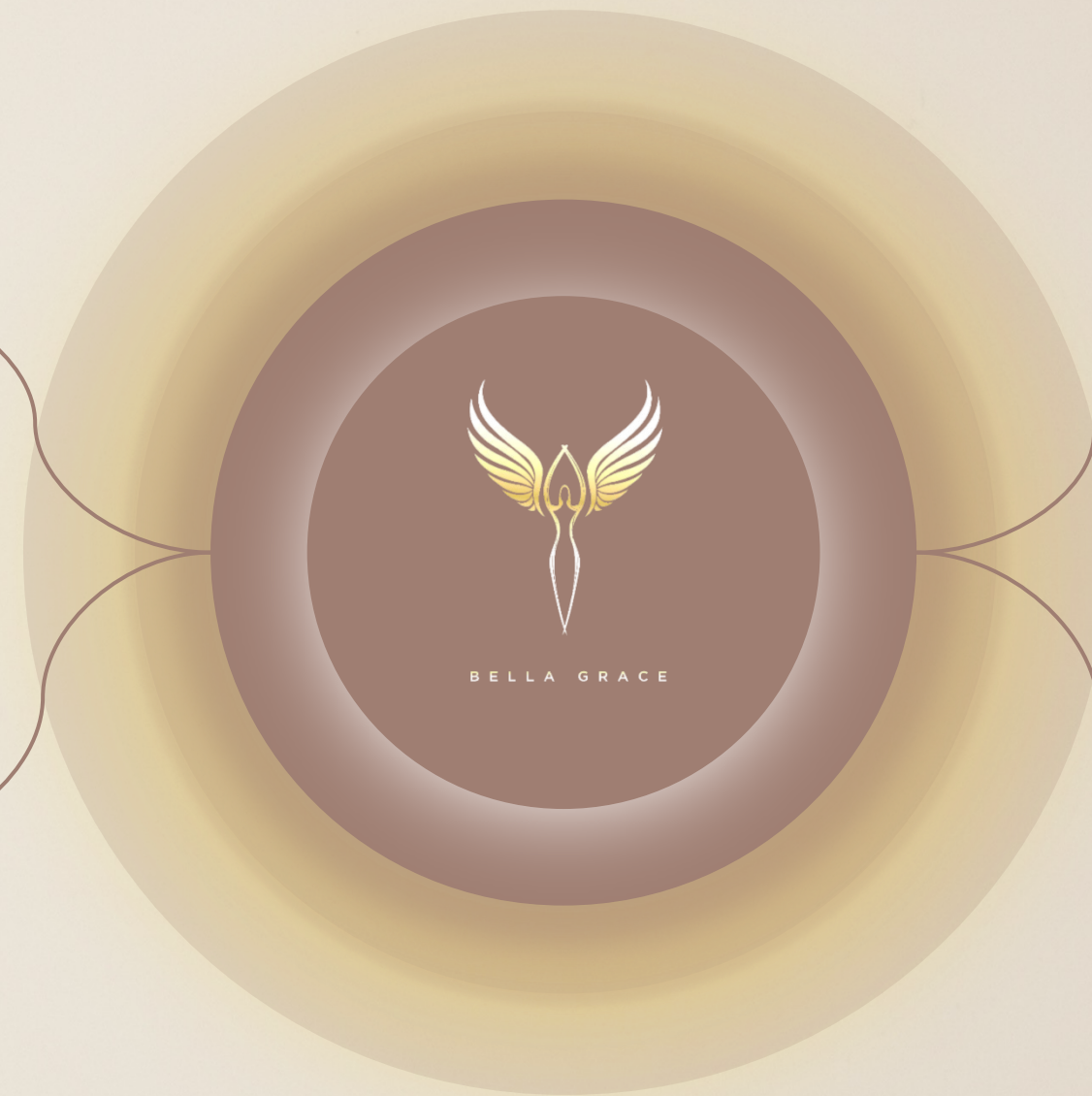
- Customer Residual Bonus
- Unilevel Team Commissions
- Universal Matching Bonus
- Rank Up Bonus
- Lifestyle Bonus



04

PAID QUARTERLY

- Global Founders Bonus Pool





CUSTOMER COMMISSIONS

PAID DAILY

Every time you introduce someone to Bella Grace or influencingU, and they purchase any Bella Grace products or an InfluencingU subscription, you'll earn Customer Commissions based on the purchase price. **You can start earning with no requirements. Simply enroll and start sharing Bella Grace and influencingU with everyone!**

CUSTOMER COMMISSIONS

PAID DAILY

When Customers purchase products from your Bella Grae website or an influencingU subscription, you'll earn Customer Commissions daily. You can start earning with no requirements. Simply enroll and start sharing influencingU with everyone!

BELLA GRACE CUSTOMER COMMISSIONS

When Customers purchase products from your Bella Grace website, you'll earn up to 30% on every Customer Purchase daily. The percentage you earn is based on your previous month's total Customer sales.

The percentage you earn is based on your previous month's total Customer purchases, retail orders and Subscribe & Save orders. New Ambassadors and Influencers will earn 10% Customer Commissions on their Customer purchases the month they enroll. The percentage they earn the following month will be based on their Customers' total purchases during the enrollment month.

Earn up to 30% on Customer purchases online for the retail price and up to 20% on Customer Subscribe & Save orders.

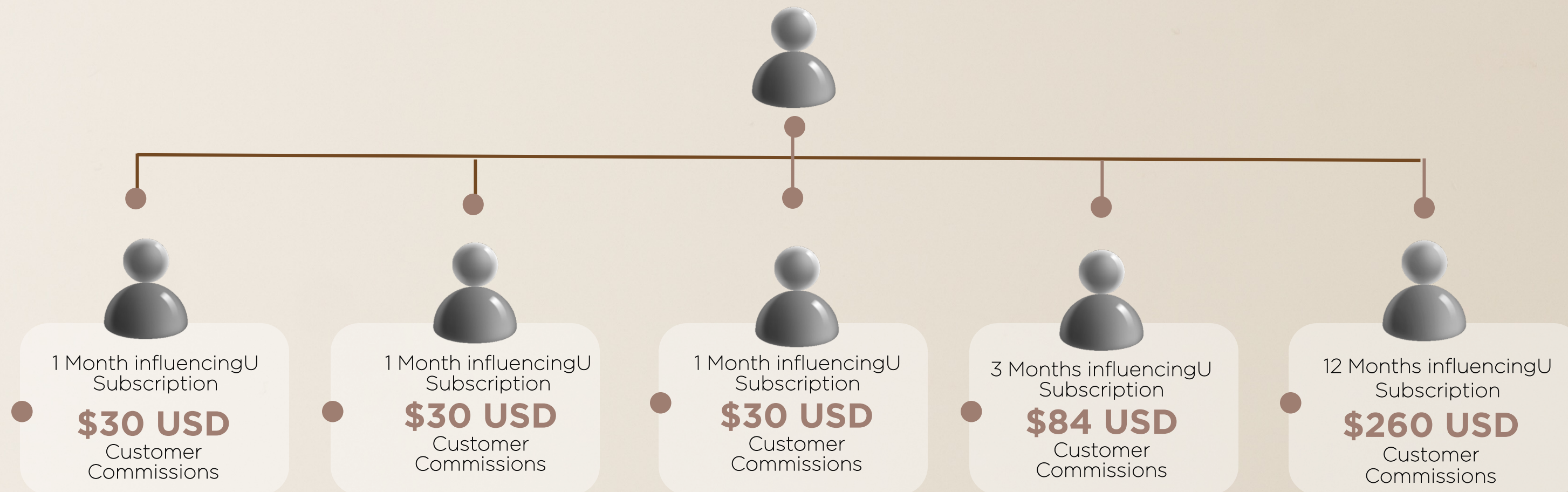
| CUSTOMER PURCHASES | RETAIL ORDERS | SUBSCRIBE & SAVE ORDERS |
|--------------------|---------------|-------------------------|
| UP TO \$499 USD | 10% | 10% |
| \$500 - \$999 USD | 20% | 15% |
| \$1000 USD + | 30% | 20% |



INFLUENCINGU CUSTOMER COMMISSIONS

PAID DAILY

Every time you introduce someone to influencingU, and they purchase a subscription or pack, you'll earn 20% in Customer Commissions based on the purchase price. You can start earning with no requirements. Simply enroll and start sharing influencingU with everyone!



CUSTOMER RESIDUAL INCOME

**1 MONTH INFLUENCING
SUBSCRIPTION-\$150**

5 Ambassadors, Influencers or Customers

\$250 USD monthly residual income

10 Ambassadors, Influencers or Customers

\$500 USD monthly residual income

20 Ambassadors, Influencers or Customers

\$1,000 USD monthly residual income



CUSTOMER RESIDUAL BONUS

PAID MONTHLY

Active Ambassadors* and Influencers with five or more personally referred Customers who pay for their InfluencingU subscription in a month will receive a Customer Sales Bonus. The more Customers you refer who pay their InfluencingU subscription in a month, the higher your Customer Sales Bonus will be.

*For Ambassadors, personally referred Ambassadors, Influencers, and Customers who pay for their influencingU subscription in a given month count towards the total.

| Number of InfluencingU Subscriptions | Customer Commissions | Customer Residual Bonus | Monthly Residual Income |
|--------------------------------------|----------------------|-------------------------|-------------------------|
| 5 | \$150 USD | \$100 USD | \$250 USD |
| 10 | \$300 USD | \$200 USD | \$500 USD |
| 20 | \$600 USD | \$400 USD | \$1,000 USD |
| 40 | \$1,200 USD | \$800 USD | \$2,000 USD |
| 60 | \$1,800 USD | \$1,200 USD | \$3,000 USD |
| 80 | \$2,400 USD | \$1,600 USD | \$4,000 USD |
| 100 | \$3,000 USD | \$2,000 USD | \$5,000 USD |
| 150 | \$4,500 USD | \$3,000 USD | \$7,500 USD |
| 200 | \$6,000 USD | \$4,200 USD | \$10,200 USD |
| 250 | \$7,500 USD | \$5,500 USD | \$13,000 USD |
| 300 | \$9,000 USD | \$7,000 USD | \$16,000 USD |

PERSONAL SPONSORING BONUS

PAID WEEKLY

Earn a 10% Personal Sponsoring Bonus on personally sponsored Ambassadors' and Influencers' orders. The 10% is paid on the purchase price. The Personal Sponsoring Bonus is not paid on product packs.

Example: If Tom and Linda purchase an Elixir on Subscribe & Save for \$121.50 and Sheri purchases a Skincare Regimen for \$170, you'll receive a Personal Sponsor Bonus of \$41.30.

$$\begin{aligned} & \$121.50 + \$121.50 + \$170 = \$413 \\ & \$413 \times 10\% = \mathbf{\$41.30} \end{aligned}$$



BUILDER BONUS

PAID DAILY

Active Ambassadors receive a Builder Bonus on every Bella Grace pack purchased by their personally sponsored Ambassadors and Influencers. The Builder Bonus is 10% of the purchase price.

There is no limit on how many product packs can be purchased by an Ambassador or Influencer, and they can be purchased at any time.



UNILEVEL TEAM COMMISSIONS

PAID MONTHLY

Ambassadors with a paid-as rank of Silver or higher can earn up to 12% in Unilevel Team Commissions.

The commission percentage and depth are determined by the paid-as rank for that month. The Unilevel Team Commissions are paid on your placement tree's GV, including your personally sponsored team.

The Company may enforce a 50% payout cap at its discretion.

| | LVL 1 | LVL 2 | LVL 3 | LVL 4 | LVL 5 | LVL 6 | LVL 7 | LVL 8 |
|----------------|-------|-------|-------|-------|-------|-------|-------|-------|
| SILVER | 7% | 7% | | | | | | |
| GOLD | 7% | 7% | 7% | | | | | |
| PLATINUM | 7% | 7% | 7% | 7% | | | | |
| SAPPHIRE | 7% | 7% | 7% | 7% | | | | |
| PEARL | 7% | 7% | 7% | 7% | 7% | | | |
| EMERALD | 7% | 7% | 7% | 7% | 7% | 7% | | |
| RUBY | 7% | 7% | 7% | 7% | 7% | 7% | 7% | |
| DIAMOND | 8% | 8% | 8% | 8% | 8% | 8% | 8% | 8% |
| DOUBLE DIAMOND | 8% | 8% | 8% | 8% | 8% | 8% | 8% | 9% |
| TRIPLE DIAMOND | 8% | 8% | 8% | 8% | 8% | 8% | 8% | 10% |
| CROWN DIAMOND | 8% | 8% | 8% | 8% | 8% | 8% | 8% | 11% |
| BLACK DIAMOND | 8% | 8% | 8% | 8% | 8% | 8% | 8% | 12% |

UNIVERSAL MATCHING BONUS

PAID MONTHLY

Maximize your earning by matching your team's Unilevel Teams Commissions. The Universal Matching Bonus rewards you for building your business and for helping your team. When your personally sponsored Ambassadors earn a Unilevel Team Commission, you'll receive a Universal Matching Bonus on whatever they earn up to six levels in your enrollment tree, not your placement tree. Your match is based on your paid-as rank.

| | LVL 1 | LVL 2 | LVL 3 | LVL 4 | LVL 5 | LVL 6 |
|----------------|-------|-------|-------|-------|-------|-------|
| PLATINUM | 10% | 5% | | | | |
| SAPPHIRE | 10% | 5% | | | | |
| PEARL | 10% | 5% | 5% | | | |
| EMERALD | 10% | 5% | 5% | | | |
| RUBY | 10% | 10% | 5% | 5% | | |
| DIAMOND | 20% | 10% | 5% | 5% | | |
| DOUBLE DIAMOND | 20% | 10% | 5% | 5% | 5% | |
| TRIPLE DIAMOND | 20% | 10% | 5% | 5% | 5% | 5% |
| CROWN DIAMOND | 30% | 15% | 5% | 5% | 5% | 5% |
| BLACK DIAMOND | 30% | 15% | 5% | 5% | 5% | 5% |



RANK UP BONUS

PAID MONTHLY



EARNING POTENTIAL

Your rank is determined on your total enrollment tree GV and excludes the GV generated by Ambassadors placed within your organization (placement tree). Personal orders up to 500 PV per month counts towards your rank qualification. For Emeralds and above, only 70% of the GV requirement can come from one leg.



RANK UP BONUS

The Rank Up Bonus rewards Ambassadors who achieve and maintain a new rank starting with Gold. New Gold through Pearl will receive a Rank Up Bonus the month they achieve it.



UNLOCK BIGGER BONUSES

Ambassadors who achieve Platinum or Sapphire within 30 days of enrollment and Pearl or Emerald within the first 60 days of enrollment, will unlock an increased Rank Up Bonus. Achieve Ruby or Diamond within 90 days of enrollment and earn a bigger Rank Up Bonus.



NEW EMERALDS

New Emeralds and above will receive their Rank Up Bonus in equal installments. Each month the new rank is maintained, an installment will be paid until the full Bonus for that rank has been paid in its entirety.



FOR EXAMPLE:

If you achieve Emerald in January, you will receive your first \$500 USD Rank Up Bonus on January's commission payment. Your next three \$500 USD amounts will be paid the months you meet the Emerald requirements. If you achieve Emerald in February, April, and May, you will receive \$500 each of those months.



STACKABLE BONUS

The Rank Up Bonus is stackable, so if you achieve Sapphire in January and Pearl in February, you'll receive both Rank Up Bonuses.

RANK UP BONUS

PAID MONTHLY

| RANK | GV (Enrollment Tree) | LEG REQUIREMENT (Enrollment Tree) | RANK UP BONUS (Enrollment Tree) | MONTH PAID |
|----------------|-------------------------|--------------------------------------|--|------------|
| AMBASSADOR | | | | |
| BRONZE | 200 | | | |
| SILVER | 500 | | | |
| GOLD | 1,500 | | \$100 USD | 1 |
| PLATINUM | 2,500 | | \$150 USD \$500 USD (WITHIN 30 DAYS OF ENROLLMENT) | 1 |
| SAPPHIRE | 6,000 | | \$250 USD \$1,000 USD (WITHIN 30 DAYS OF ENROLLMENT) | 1 |
| PEARL | 12,500 | | \$500 USD \$2,000 USD (WITHIN 60 DAYS OF ENROLLMENT) | 1 |
| EMERALD | 25,000 | 70% LEG MAX | \$2,000 USD \$5,000 USD (WITHIN 60 DAYS OF ENROLLMENT) | 4 |
| RUBY | 50,000 | 70% LEG MAX | \$5,000 USD \$10,000 USD (WITHIN 90 DAYS OF ENROLLMENT) | 8 |
| DIAMOND | 100,000 | 70% LEG MAX | \$10,000 USD \$15,000 USD (WITHIN 90 DAYS OF ENROLLMENT) | 12 |
| DOUBLE DIAMOND | 200,000 | 70% LEG MAX 1 DIAMOND LEG | \$20,000 USD | 16 |
| TRIPLE DIAMOND | 400,000 | 70% Leg Max 2 DIAMOND LEGS | \$40,000 USD | 20 |
| CROWN DIAMOND | 600,000 | 70% Leg Max 3 DIAMOND LEGS | \$60,000 USD | 24 |
| BLACK DIAMOND | 1,200,000 | 70% Leg Max 4 DIAMOND LEGS | \$120,000 USD | 24 |

Bella Grace realizes life happens and it's not always possible to achieve your new rank in consecutive months. We do not require that these months be consecutive to receive your full Rank Up Bonus. Each month you achieve your new rank again you'll be paid the bonus until the full Rank Up Bonus for that rank is paid.

GENERATIONAL DEPTH BONUS

PAID MONTHLY

The Generational Depth Bonus pays active Double Diamond and above 3% on volume generated from all sales in their enrollment tree up to three Diamond levels.

Generation 1 is all the Ambassadors down to the first Diamond on any given leg.

Generation 2 is all the Ambassadors below the first Diamond down to the next Diamond in the same leg.



| RANK | GEN 1 | GEN 2 | GEN 3 |
|-----------------------|-------|-------|-------|
| DOUBLE DIAMOND | 3% | | |
| TRIPLE DIAMOND | 3% | 3% | |
| CROWN DIAMOND | 3% | 3% | 3% |
| BLACK DIAMOND | 3% | 3% | 3% |

LIFESTYLE BONUS

PAID MONTHLY



The Lifestyle Bonus Is Yours To Use However You Choose.



The lifestyle bonus rewards paid-as sapphires and above with cash on the second month they maintain their new rank.



Sapphires Earn **\$250 Usd** Monthly.

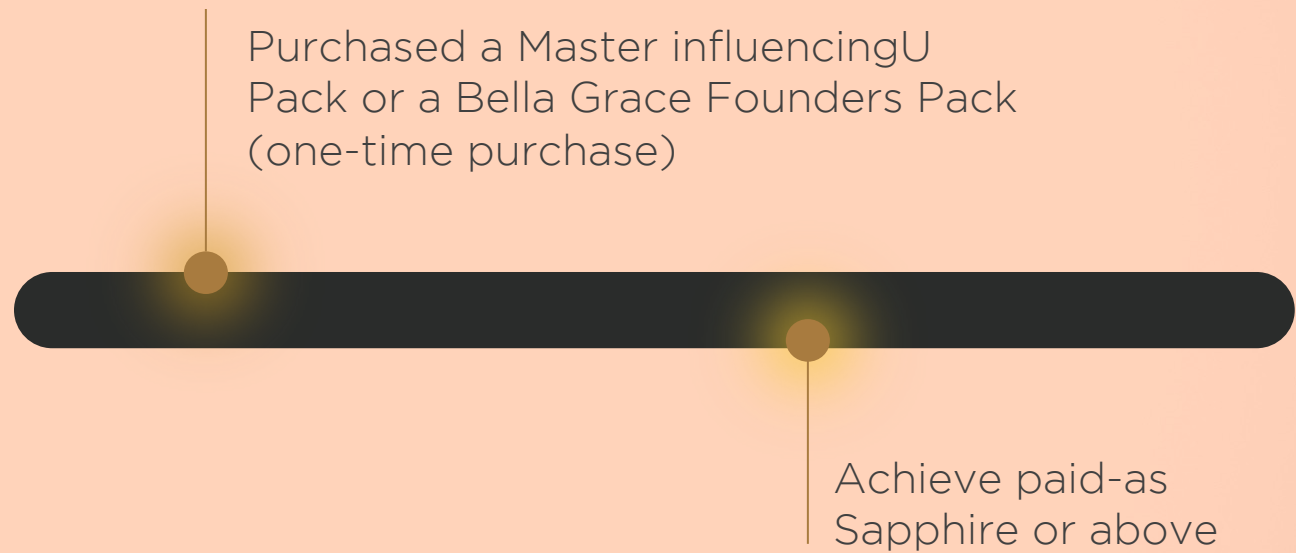


Pearls+ Earn Additional **\$250 Usd** Total **\$500 Usd** Monthly

GLOBAL FOUNDERS BONUS POOL

Become a Founder and earn shares in the company's quarterly success. Each quarter 2% of the global GV is allocated to the Global Founders Bonus Pool. Active paid-as Sapphires and above can earn shares based on their paid-as rank.

To earn share, Ambassadors must achieve the following every month of the quarter:



| PAID-AS RANK | SHARES |
|------------------------|----------|
| SAPPHIRE THROUGH PEARL | 1 SHARE |
| EMERALD & RUBY | 2 SHARES |
| DIAMOND & ABOVE | 3 SHARES |

To participate in the Global Founders Bonus Pool, you must qualify every month within a quarter and meet all requirements for each of those three months to earn shares. Shares are accumulated monthly based on your paid-as rank.



WHEN ARE COMMISSIONS PAID?

DAILY PAY A

- Daily period timing: 12:00 AM to 11:59 PM PT.
- Commissions processed daily.
- **Paid the next day.**
Example: Purchase at 11:00 PM → paid next day.

MONTHLY C

- Monthly period timing: First to last day.
- Starts: 12:00 AM PT on the 1st.
- Ends: 11:59 PM PT on the last day.
- Monthly commissions: Paid by the 15th.
- **Example: Sales in March → paid by April 15th.**

WEEKLY B

- **Weekly period timing: Monday to Sunday.**
- **Starts: Monday 12:00 AM PT.**
- **Ends: Sunday 11:59 PM PT.**
- **Weekly commissions: Paid on Mondays.**
- **Example: Sales made this week → paid next Monday.**

QUARTER D

- **Quarterly period: 3 full calendar months.**
- **Quarters: Jan-Mar, Apr-Jun, Jul-Sep, Oct-Dec.**
- **Quarterly bonuses: Paid on next monthly check.**
- **Example: Bonus earned in Q1 → paid in April.**



DAILY COMMISSIONS

**There are no requirements to start
earning Customer Commissions daily.**



QUALIFYING FOR WEEKLY & MONTHLY COMMISSIONS

TO EARN COMMISSIONS, YOU MUST MEET ONE OF THE FOLLOWING:

When you meet one of the active requirements you will be considered active for that commissionable week and are eligible to earn weekly and monthly commissions for that month and the following month. A commissionable week starts Monday at 12:00 AM Pacific Time and ends Sunday at 11:59 PM Pacific Time.

For example: If a customer places an order on March 16th, as long as you are active by March 22nd, you'll receive daily and weekly commissions for the rest of March and the entire month of April. If you are not active in April, you will not receive daily and weekly commission in May until you are active. Once you are active in May, you will start earning daily and weekly commissions for that commissionable week plus the rest of May and June.

100 GV IN CUSTOMER PURCHASES

**PERSONAL ORDER OF 50 PV
OR MORE**

PERSONALLY BE U+3=FREE QUALIFIED

QUALIFYING FOR QUARTERLY COMMISSIONS

GLOBAL FOUNDERS BONUS POOL
TO EARN SHARES, AMBASSADORS MUST PURCHASE A MASTER
INFLUENCER PACK OR FOUNDERS PACK.

Each month of the quarter, Ambassadors must be paid-as Sapphire.

A quarterly period runs 3 full calendar months. The quarters are:

JANUARY THROUGH MARCH

APRIL THROUGH JUNE

JULY THROUGH SEPTEMBER

OCTOBER THROUGH DECEMBER

TERMS & DEFINITIONS

| | |
|-----------------------------|---|
| ACTIVE | An Ambassador is considered active when he/she meets one of the following: Personal order of 50 PV or higher; 120 GV in Customer purchases; or is U+3=FREE Qualified. |
| COMPRESSION | Compression occurs when an Ambassador does not meet the requirements to receive a Bonus. The next active Ambassador who does meet the requirements receives the Bonus. Compression is applicable to the Unilevel Team Commissions and Leadership Overrides. |
| CUSTOMER | A Customer is a person who purchases products only. A Customer can upgrade to an Influencer or Ambassador. |
| ENROLLING SPONSOR | Your enrolling sponsor is the Ambassador who enrolled you. |
| ENROLLMENT TREE | The people you personally enroll and the people they enroll are in your Enrollment Tree. |
| GENERATION | For the Generational Depth Bonus, a generation is all of the Ambassadors down to your first Diamond in any given leg. That Diamond and all the Ambassadors down to the next Diamond are on your second generation. |
| GROUP VOLUME (GV): | Refers to the value associated with a product. Your GV consist of your personal purchases, and purchases from Customers, Influencers and other Ambassadors in your placement or enrollment tree. |
| LEVEL | The Ambassadors you personally enroll are on your first level. The Ambassadors they enroll are on your second level, etc |
| PAID-AS RANK | Your paid-as rank is based on meeting the qualifications for each rank during a monthly commission period. Your paid-as rank may fluctuate month to month based on meeting the rank requirements. |
| PERSONAL VOLUME (PV) | Volume from your personal and customer purchases is called PV. |
| PLACEMENT TREE | The Placement Tree allows you to strategically position your personally sponsored Ambassadors within your team structure. Once placed, the Ambassador becomes part of the Placement Tree for both you (the enroller) and the team member they are placed under. This positioning plays a key role in determining Unilevel Team Commissions. The people you place are still front line to you in your Enrollment Tree. |
| U+3 = FREE QUALIFIED | When three or more personally referred friends (Ambassadors, Influencers, or Customers) purchase an Elixir subscription, you can earn your Elixir Subscription for free. All you pay for is shipping and tax. Receive up to two Elixirs for free. |



25



BELLA GRACE